

NetIQ® MailMarshal™

The most powerful, feature-rich anti-spam and email security solution available

Overview

NetIQ® MailMarshal™ SMTP is a fast, easy-to-use external email security solution that ensures a safe and productive working environment by enforcing organizational Acceptable Use Policies and protecting against spam viruses and other Internet-borne attacks like Denial of Service (DOS) or Directory Harvest Attacks (DHA).

NetIQ MailMarshal SMTP works with any SMTP mail system, including Microsoft Exchange, Novell GroupWise, Lotus Domino, Sendmail and Linux mail servers to scrutinize all components of an email message, including text, attachments and embedded content. Transparent to end users, NetIQ MailMarshal SMTP provides organizations with the solution they need to manage email content, fight spam, secure their email infrastructure and enforce Acceptable Use Policies with little or no disruption of business activities.

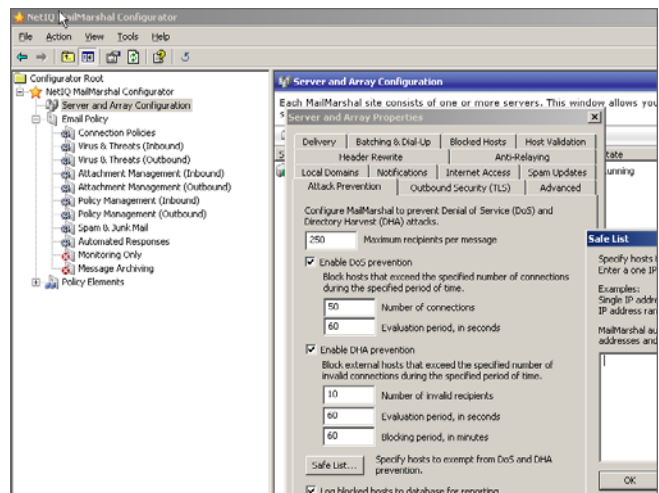
Solutions for Today

Email is an essential communication tool for most businesses today. However, it also creates serious productivity and security issues, providing both an entry point for spam—unwanted, non-business content and malicious code as well as other Internet attacks—and an exit point for proprietary data and confidential information.

To combat this spam and security epidemic, NetIQ MailMarshal SMTP offers many security specific features such as SpamCensor, an advanced anti-spam engine that dramatically improves productivity by shielding employees from unwanted, non-business related emails. This also conserves bandwidth since spam is stopped before it enters the network.

Key Benefits

Improves efficiency - Increases employee productivity and conserves valuable network bandwidth and server resources by fighting spam. Spam can be classified by type, eliminating the need to review and manage known spam messages. Furthermore, users are empowered to review their own quarantined email using an intuitive web-based interface, saving additional time by not having to contact Help Desk resources for assistance.



Specific DOS/DHA attack prevention is embedded as a standard feature in NetIQ MailMarshal SMTP.

Reduces security exposure - Scrutinizes all incoming and outgoing messages to protect the company and the network from spam and inappropriate use. Only authorized information is allowed to enter or leave the network, while annoying and potentially harmful messages are blocked at the gateway. It also provides protection against Internet borne attacks such as DOS or DHA attacks ensuring that the email servers are protected.

Adapts to corporate Acceptable Use Policy - Flexible enough to accommodate the most complex of corporate email policies, NetIQ MailMarshal SMTP can support a full range of rule options to apply different policies to individuals, groups or the entire organization.

Increases legal compliance and liability protection - Assists your organization in meeting legal and industry compliance standards with simple, yet powerful features, such as message disclaimers and controls and alerts on questionable or offensive email activity. NetIQ MailMarshal SMTP helps maintain a safe and productive working environment, reducing inappropriate use or opportunities for harassment and providing an audit trail.



NetIQ® MailMarshal™

Technical Features

- Anti-spam solution with SpamCensor technology
- End-user management of spam including personalized white and blacklists of email senders and scheduled email spam reports for users
- Enterprise-class scalability for thousands of users, allowing administrators to manage hundreds of NetIQ MailMarshal SMTP servers from a single administration console
- Web-based Management Console provides management access inside and outside the office
- World-leading performance, load-balancing, enterprise scalability and redundancy
- Comprehensive filtering with lexical and weighted content Scanning, extensive suRBL and RBL support
- Completely customizable email policy enforcement and security for individuals, groups or the entire organization
- More than 25 built-in reports summarizing spam, email virus and ROI statistics
- Automated email responses to routine messages and requests
- Unpacking and scanning of attachments, supporting more than 170 different file types, including recursive archive unpacking
- ESMTP support (blocks oversized messages before they arrive)
- Full POP3 mail service for stand-alone use
- Active Directory and LDAP support synchronizes user groups with Exchange, Notes and others
- Extended protection for your NetIQ MailMarshal SMTP server with native protection against DOS and DHA
- Transport Layer Security between compliant gateways to ensure email privacy*
- Zero Day Attack Protection that prepares the customer installation to receive urgent updates from NetIQ
- Messages blocking capabilities based on the originating Country
- Installation definitions (Custom, Basic or Monitor Only) for easier and quicker installation

System Requirements

Hardware

Suggested example hardware for a stand-alone NetIQ MailMarshal SMTP server:

- 1,000 users: Pentium 1.8 Ghz, 20GB HD, 512MB RAM
- 10,000 users: Dual Pentium 2.8 GHz, 128GB HD, 1GB RAM

Software

- Windows 2000/XP/2003
- Microsoft SQL Server 2000 (MSDE 2.0, a free runtime version of SQL Server, can be used for smaller sites)
- Optional Internet Information Services (IIS) 5.0 or higher for WebTools
- ASP.NET 1.1. ASP.NET is part of the .NET Framework 1.1

*This product includes software developed by the OpenSSL Project for use in the OpenSSL Toolkit. (<http://www.openssl.org/>)

Contacts

Worldwide Headquarters

NetIQ Corporation

3553 North First Street

San Jose, CA 95134

713.548.1700

713.548.1771 fax

888.323.6768 sales

info@netiq.com

www.netiq.com

NetIQ EMEA

+44 (0) 1784 454500

info-emea@netiq.com

NetIQ Japan

+81 3 5909 5400

info-japan@netiq.com

www.netiq.co.jp

NetIQ Australia

& New Zealand

+61 2 9925 2100

www.netiq.com.au

For our offices in Latin America & Asia Pacific, please visit our web site at www.netiq.com/contacts

NetIQ MailMarshal SMTP, NetIQ and the NetIQ logo are trademarks or registered trademarks of NetIQ Corporation or its subsidiaries in the United States and other jurisdictions. All other company and product names may be trademarks or registered trademarks of their respective companies.

