

NetIQ Directory and Resource Administrator

Improve security, demonstrate compliance and streamline the administration of Microsoft Active Directory and Exchange Server

PRODUCT BRIEF

Introduction

Microsoft Active Directory has a unique role as both a data store for confidential business information and a gateway to other critical IT systems, which means that it must be diligently protected. However, the lack of native administrative controls can easily lead to elevated, unmonitored access and significant business problems – including service disruptions, inconsistent administration practices, incomplete data, and unnecessary security exposure of sensitive or confidential information.

NetIQ® Directory and Resource Administrator™ provides key features and controls to enhance the security and efficiency of Active Directory administration.

Product Overview

NetIQ Directory and Resource Administrators advanced delegation and robust, policy-based administration capabilities across single and multi-domain environments, improves the security and efficiency of Active Directory administration. It can also deliver single-point, policy-based administration for Microsoft Exchange (Exchange) mailbox management across your enterprise.

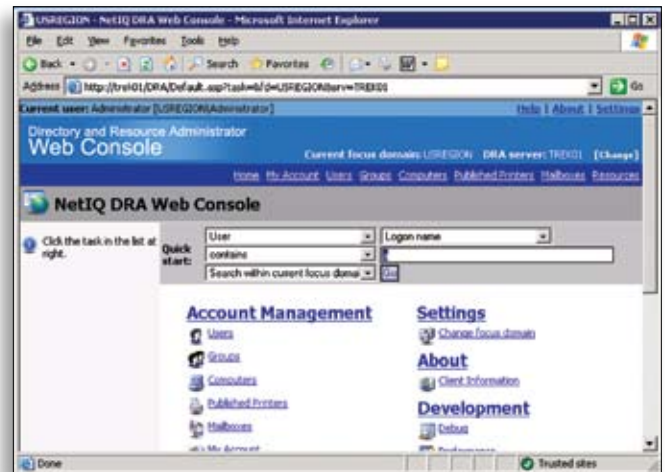
By securely delegating administrative privileges and standardizing controls, you to more quickly respond to business requests, while decreasing the burden on administrative staff and improving adherence to process.

Capabilities

NetIQ Directory and Resource Administrator enables you to granularly delegate administrative privileges to reduce administrative burden on your highly skilled, but highly tasked, administrators. In addition, by capturing and storing all administrative activity, you have the comprehensive audit trail necessary to produce reports that satisfy management and audit requirements.

NetIQ Directory and Resource Administrator helps ensure that your Active Directory environment is securely and efficiently administered by providing:

- > **Granular access controls** – protects your core Windows environment from the risk of privilege escalation and inadvertent security threats by granularly controlling user access and reducing the number of users with administrative privilege.



NetIQ Directory and Resource Administrator provides an easy-to-use Web Console for the casual administrator or help desk user.

- > **Centralized activity logs and reports** – helps achieve and maintain regulatory compliance with mandates such as PCI DSS, FISMA, HIPAA, and NERC CIP through granular privilege control coupled with centralized logging of all administrative actions and flexible comprehensive reporting.
- > **Controlled self-service tasks** – enables IT administrators to increase efficiency by transferring common user and mailbox management functions to the help desk or, via self-service functionality, to the end user.
- > **Automation and secure privilege delegation** – reduces administration costs and enforces business and security policies by automating repetitive and complex tasks, and use controlled delegation to distribute common account administration duties.
- > **Improved data integrity** – reduces data pollution by consistently enforcing business policies and controlling the format and amount of data entered into your Active Directory and Exchange objects..

For more information:

Worldwide: +1 713.548.1700 • N. America Toll Free: 888.323.6768
E-mail: info@netiq.com • NetIQ.com



NetIQ Directory and Resource Administrator

Features

- More than 60 roles, 300 powers, and highly-customizable rule-based delegation, providing secure delegation of administrative entitlements and permissions.
- Task-centric Web Console organized for administrators or help desk users.
- Self-administration capabilities so that users can update their own personal information, such as phone numbers and addresses, as well as reset passwords.
- A Recycle Bin to simplify the restoration of deleted objects without complicated backup and restore procedures.
- Out-of-the-box reporting.
- Drag-and-drop report customization for cross-functional communication.
- Dual-Key Security, requiring two administrators to confirm a change (e.g., deletion of a user account).
- Comprehensive logging of user actions, assuring a detailed audit trail for subsequent analysis or investigation and read-only archive technology to prevent audit events from tampering for a reliable and authoritative audit trail.
- Audit record retention to meet stringent data localization laws and regulations.
- User status and user summary reporting for granular detail or high-level trending analysis.
- Virtual extensions to Active Directory objects, using Active Directory Lightweight Directory Services (LDS) to create and manage virtual attributes without requiring any extension of the Active Directory schema.
- In-console launch of scripts or other applications through a managed object's context menu.
- LDAP-based search queries, allowing advanced searches

to be created and shared across administration teams.

- Scriptable LDAP-compatible ADSI provider, enabling easy extension of available automation routines.
- Support for automated, rules-based provisioning of Active Directory based on Human Resource database feeds (e.g., SAP) through IQ Extend for Account Provisioning.

Key Differentiators

- > **More secure architecture** – by not relying on native domain administrator privileges and Active Directory ACLs or utilizing Microsoft SQL Server as a data engine for delegation. Additionally, NetIQ Directory and Resource Administrator provides power checking to ensure users cannot escalate privileges in Active Directory.
- > **Task-driven administration for business and support personnel** – provides a task-driven administration wizard that enables non-administrative personnel or lower-skilled administrators to perform administrative tasks.
- > **Comprehensive auditing and reporting** – records all administrative activity and stores granular audit events, which are archived in a compressed and tamper-resistant data store to help IT staff, management, and auditors answer critical questions during an audit, a security breach, or a management review.
- > **Enterprise scalability** – replicates only delta changes when and if changes take place to the delegation model, providing the ability to target changes to specific domain controllers. This enables users to get up and running without having to wait for replication (i.e., password resets, enable and disable accounts, group amendments).

To learn more about NetIQ Directory and Resource Administrator, or to start a trial, go to www.netiq.com/dra.

Worldwide Headquarters

1233 West Loop South, Suite 810
Houston, Texas 77027 USA
Worldwide: +1 713.548.1700
N. America Toll Free: 888.323.6768
info@netiq.com
NetIQ.com
<http://community.netiq.com>

For a complete list of our offices

in North America, Europe, the Middle East, Africa, Asia-Pacific and Latin America, please visit www.netiq.com/contacts.

Follow us:   

NetIQ, an Attachmate business.

NetIQ, the NetIQ logo, NetIQ Directory and Resource Administrator, NetIQ Exchange Administrator and ActiveView are trademarks of NetIQ Corporation in the USA. All other company and product names may be trademarks of their respective companies.