

Security Administration Suite

Implement access and change control for Active Directory

Overview

NetIQ's Security Administration Suite provides powerful enterprise-level privilege management for your Windows environments. With the suite's advanced delegation and policy-based administration you can enhance change control and security while dramatically decreasing your workload and administrative costs.

The suite is comprised of Directory and Resource Administrator™, Directory Security Administrator™ and NetIQ Group Policy Administrator™.

Solutions for Today

While Active Directory provides a powerful management infrastructure, enforcing appropriate controls as mandated by regulatory guidelines within your Windows environment remains a constant challenge. Uncontrolled user and desktop changes can both increase downtime and cause organizations to fall short of regulatory compliance objectives.

NetIQ's Security Administration Suite is the only solution on the market that can overcome these issues by delivering task-appropriate directory access, while reducing operational costs and enhancing your organization's security posture by leveraging NetIQ's unique Layered Security Architecture (LSA).

Key Benefits

Improves security through granular access control -

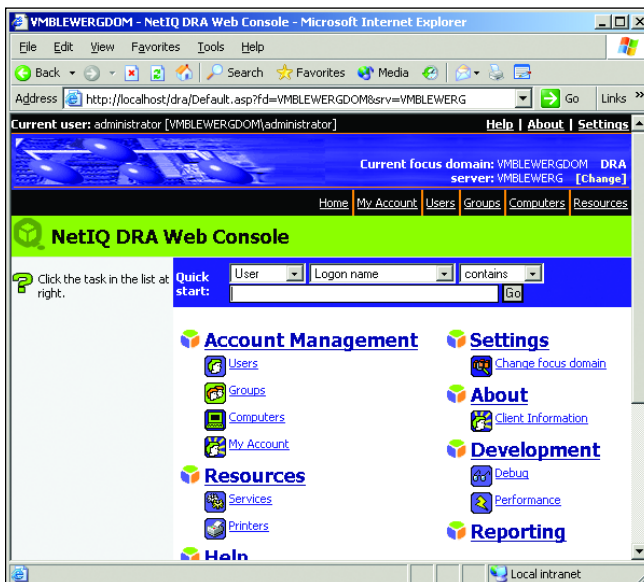
Secures your enterprise by reducing the number of privileged accounts and the risk of power escalation and identity theft. Security Administration Suite enables you to dramatically reduce the number of administrators who need privileges within Active Directory.

Reduce risks with change control - Reduces risk by ensuring that the appropriate level of change control is implemented for different kinds of changes to Active Directory. Group Policy changes, which can have severe and immediate impact to Active Directory, are controlled with approval workflow, version control and change impact simulation before promoting them into the live environment. User account deletes, which can result in time consuming restores when done inappropriately, are controlled through dual key authorization requiring tiered approve before final deletion. Finally, routine changes to Active Directory content are controlled with automated validation policies. This ensures that information being entered conforms to corporate standards without requiring time consuming manual approval of these frequent changes.

Increases administration efficiency - Simplifies administration by helping implement a management model that reflects how you think and work. With little or no training, IT administrators can transfer common user and mailbox management functions to the help desk or, with the tool's self-service functionality, to the end user. Help desk users can work more efficiently with the product's easy-to-use interface, which hides unnecessary complexity and automates manual tasks.

Reduces administration costs - Enables you to automate and delegate user and Group Policy management tasks. In addition wizard-driven task completion reduces the learning curve for users and minimizes the risk of errors.

Enables task-appropriate directory access - Uses LSA to assign directory access options, based on needs and privilege level. The access options include native, so administrators can perform tasks within AD requiring elevated levels of privilege; protected, which gives help desk administrators access to perform tasks requiring low privilege but high automation; and offline, which allows policy administrators to perform tasks requiring testing and approval before promotion to a live environment.



NetIQ's Directory and Resource Administrator provides an easy-to-use Web Console for administrators and help desk users.

Security Administration Suite

Technical Features

- Rules-based delegation supports using wildcards and naming conventions to define views of your Active Directory.
- More than 60 roles and 300 powers can be used for delegation.
- Allows role definitions and application to be stored inside or outside Active Directory.
- Self-administration allows you to delegate the ability for users to update their own personal information, such as phone number and address.
- Dynamic ActiveView™ technology can span organizational units, domains, trees and forests, as well as Windows Server 2003, Windows 2000, Windows NT and Active Directory.
- Offline\Online Resultant Set of Policies (RsoP) analysis determines the set of effective policies that apply to a user when logged on to a specific machine, including "what-if" scenarios. Offline RSoP allows scenario simulation without having to roll-out changes to production environment first.
- Off-line Group Policy editing allows Group Policy Object (GPO) changes to be made off-line and then subjected to normal testing, approval and release processes.
- Group Policy rollback provides administrators with rollback capacity to allow a prior version of a GPO to be put back into production.
- Detailed auditing and reporting offers more than 85 built-in reports.
- Support for task automation procedures can be initiated before or after any action.
- Security Administration Suite includes scriptable LDAP-compatible ADSI provider.
- The suite supports several development languages, including C++, VB, VBScript and JScript.

Contacts

Worldwide Headquarters

NetIQ Corporation
3553 North First Street
San Jose, CA 95134
713.548.1700
713.548.1771 fax
888.323.6768 sales
info@netiq.com
www.netiq.com

NetIQ EMEA

+44 (0) 1784 454500
info@netiq.com

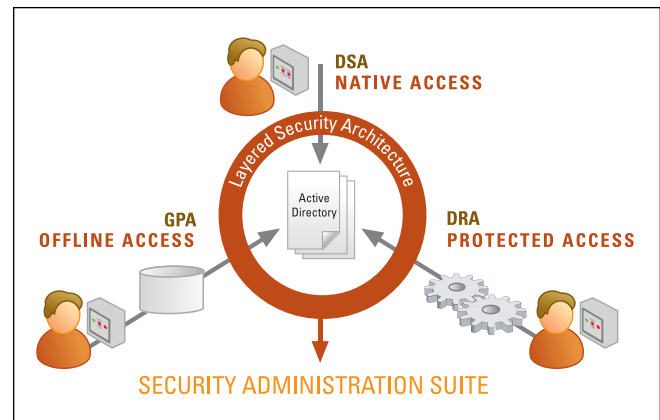
NetIQ Japan

+81 3 5909 5400
info-japan@netiq.com
www.netiq.co.jp

NetIQ Australia & New Zealand

+61 2 9925 2100
www.netiq.com.au

For our offices in Latin America & Asia Pacific,
please visit our web site at www.netiq.com/contacts



NetIQ's unique Layered Security Architecture provides task appropriate directory access to enable native ACL management, centralized auditing of access, and offline Group Policy change management in a single solution.

System Requirements

Refer to the individual datasheets for Directory and Resource Administrator, Directory Security Administrator, NetIQ Group Policy Administrator and Secure Password Administrator for System Requirements at www.netiq.com/solutions/finder.asp